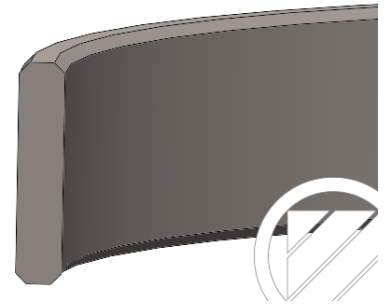


GS 10



DESCRIPTION

Product group: Guiding elements
Design: Guide strip
Profile no.: 10
Material: PTFE bronze filled

OPERATIONAL APPLICATION LIMITS

Temperature (°C): -60 bis +200°
Running speed (m/s): ≤ 15 m/s

MEDIA

- Hydraulic oils compliant with DIN 51524 part 1 – 3
- Mineral-based lubricating oils and greases
- Flame-retardant hydraulic fluids HFA, HFB, HFC compliant with VDMA 24317

FUNCTION

Guide tapes made of PTFE compounds serve to guide pistons or piston rods. They prevent the metallic contact of parts and absorb the translational force that occurs. Guide tapes made of PTFE compounds are characterised by their outstanding friction behaviour, which minimises the stick-slip effect. They also exhibit high thermal and chemical resistance. PTFE guide tapes are suitable for medium surface pressures.

REMARKS

Guide tapes offer the advantage of universal applicability. Beveling prevents edge pressure in groove corners and facilitates installation.

